

WOOSTER®

SHERLOCK® Wide Boy™

HULK™

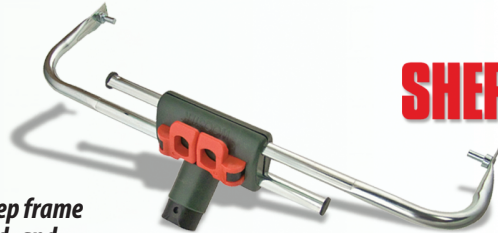


**Big.
Strong.
Durable
& Green**

The Sherlock Wide Boy Hulk is made for big jobs. Red cam levers securely hold the frame arms in place while using 12- to 18-inch rollers. Made of rigid tubular steel, the Hulk resists pressure for excellent results on walls, floors or ceilings. The extra-strength design actually weighs less than one pound to reduce fatigue. Like all Sherlock products, the Hulk is made with advanced features and long-lasting quality that only Wooster can provide.



Quick cam levers keep frame arms securely locked, and release for easy adjustment. Always be sure to completely open or close cam levers.



SHERLOCK Wide Boy HULK

- Adjusts to hold roller covers 12" to 18" long, standard or 2¼" jumbo diameter
- Quick cam levers unlock and securely lock the frame arms—no loose hardware
- Rigid tubular steel frame arms, durable fiberglass-reinforced nylon body
- Extra-strength design weighs less than one pound
- Reinforced threads, Sherlock GT® compatible



To adjust tension: open cam levers and tighten or loosen nuts underneath frame assembly by hand or with a 5/8" socket. Do not overtighten.

Cat. No.	UPC	Size	Width	Shelf Pack	Cubic Ft. Per Pack	Pounds Per Pack
BR047	0-71497-68518-6	18"	12"-18"	3	.407	2.89